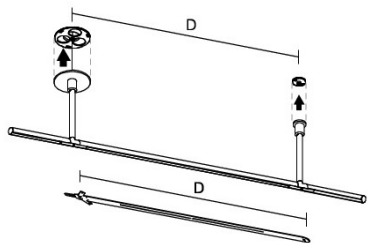
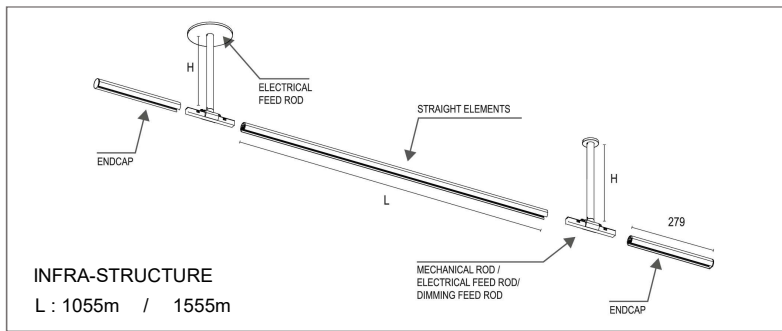


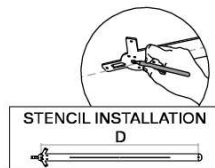
# INFRA - STRUCTURE Evolution

DESIGNED BY VINCENT VAN DUYSSEN



## STENCIL INSTALLATION (別売)

D : 1100m / 1600m

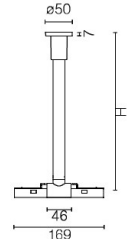


■ 08.0032.00  
D : 1100 mm

■ 08.0033.00  
D : 1600 mm

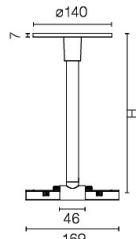
ELECTRICAL FEED ROD  
MECHANICAL ROD  
DIMMING ROD

Φ50mm

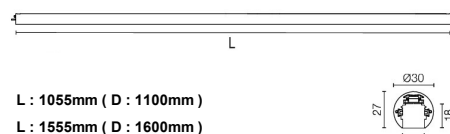


ELECTRICAL FEED ROD  
MECHANICAL ROD  
DIMMING ROD

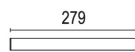
Φ140mm



STRAIGHT ELEMENTS



END CAP



Electrical feed rod  
Φ50mm

H (mm)	100 mm	■ 06.5120.xx
	300 mm	■ 06.5121.xx
	400 mm	■ 06.5122.xx
	700 mm	■ 06.5123.xx

Mechanical rod  
Φ50mm

H (mm)	100 mm	■ 06.5110.xx
	300 mm	■ 06.5111.xx
	400 mm	■ 06.5112.xx
	700 mm	■ 06.5113.xx

Dimming rod  
Φ50mm

H (mm)	100 mm	■ 06.5150.xx
	300 mm	■ 06.5151.xx
	400 mm	■ 06.5152.xx
	700 mm	■ 06.5153.xx

Electrical feed rod  
Φ140mm

H (mm)	100 mm	■ 06.5125.xx
	300 mm	■ 06.5126.xx
	400 mm	■ 06.5127.xx
	700 mm	■ 06.5128.xx

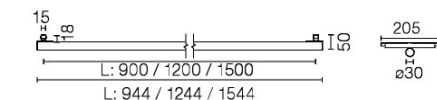
Mechanical rod  
Φ140mm

H (mm)	100 mm	■ 06.5115.xx
	300 mm	■ 06.5116.xx
	400 mm	■ 06.5117.xx
	700 mm	■ 06.5118.xx

Dimming rod  
Φ140mm

H (mm)	100 mm	■ 06.5155.xx
	300 mm	■ 06.5156.xx
	400 mm	■ 06.5157.xx
	700 mm	■ 06.5158.xx

BLIND TUBE



Straight elements

L (mm)	On board Dimmer
1055 mm	■ 06.5140.xx
1555 mm	■ 06.5141.xx

L (mm) DALI

1055 mm	■ 06.5100.xx
1555 mm	■ 06.5101.xx

L : 1055mm ( D : 1100mm )  
L : 1555mm ( D : 1600mm )

Blind tube

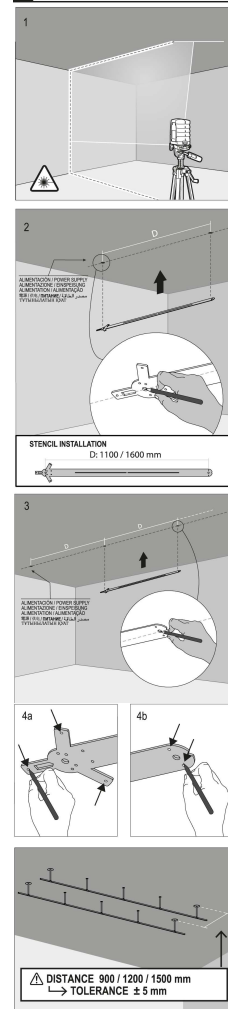
L (mm)	900 mm	■ 03.8120.xx
	1200 mm	■ 03.8121.xx
	1500 mm	■ 03.8121.xx

End cap

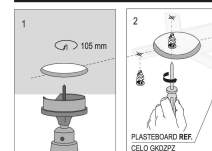
On board Dimmer	■ 06.5142.xx
-----------------	--------------

DALI  
■ 06.5135.xx

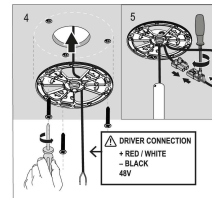
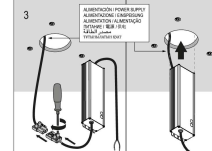
## 1. A LUMINAIRE INSTALLATION



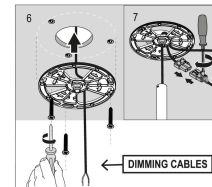
## 2. 1. ROD Φ140



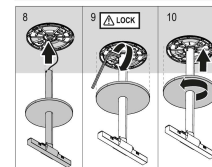
ELECTRICAL FEED



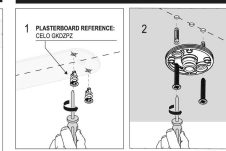
DIMMING FEED



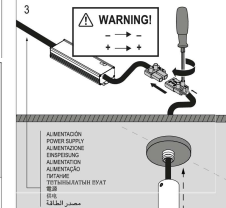
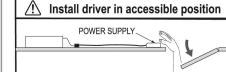
MECHANICAL / ELECTRICAL FEED / DIMMING FEED



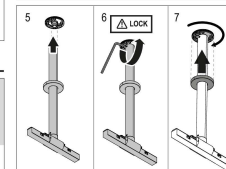
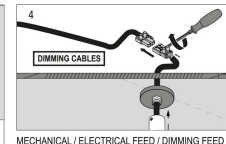
## 2. ROD Φ50



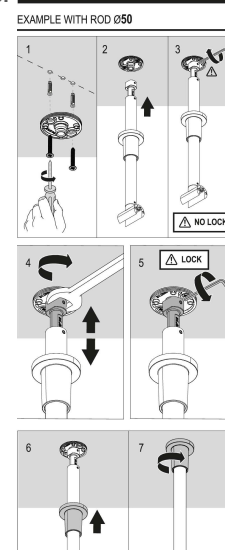
ELECTRICAL FEED



DIMMING FEED

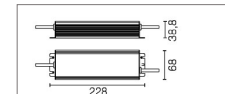


## 3. ADJUSTABLE ROD Φ50



## 1. B ELECTRICAL CONNECTION

※定格48V Max 6A-320W



■ 別売電源ドライバ  
HLG - 185H - 48V  
HLG - 320H - 48V

## ■ 施工方法

1. 設置する直線上にSTRAIGHT ELEMENTS ( L1100 / L1600 ) の間隔で墨出しをして下さい。
2. FEED ROD ( Φ140 / Φ50 ) を設置して下さい。※電源 1 台にFEED RODが1台、必要になります。
3. MECHANICAL ROD を設置して下さい。  
※DALI信号制御調光の場合はDIMMING RODが 1 列毎に1台、必要になります。
4. STRAIGHT ELEMENTS とEND CAPをRODに連結します。 → 本誌 4 ページ参照
5. 最後にRODにあるSTRAIGHT ELEMENTS とEND CAPの接点のロックをかけて固定して下さい。  
※RODの高さは天井から一定になるように施工して下さい。

## ■ 給電方法

1. 給電本体 ELECTRICAL FEED ROD を48V ( -185W / -320W ) の電源ドライバと接続して下さい。  
※ DALI信号制御調光の場合は、DALI信号線をDIMMING RODの信号と接続して下さい。

