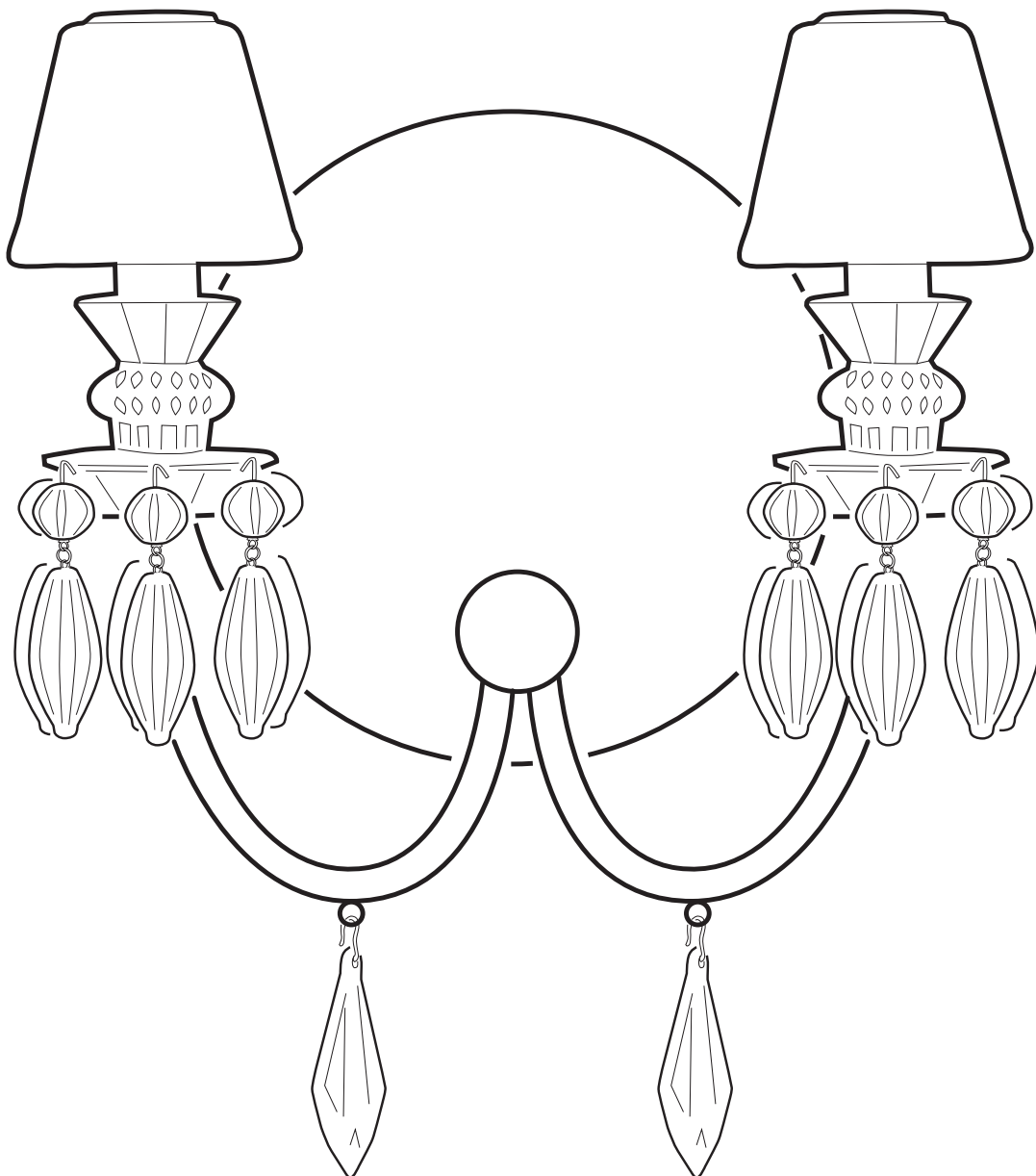
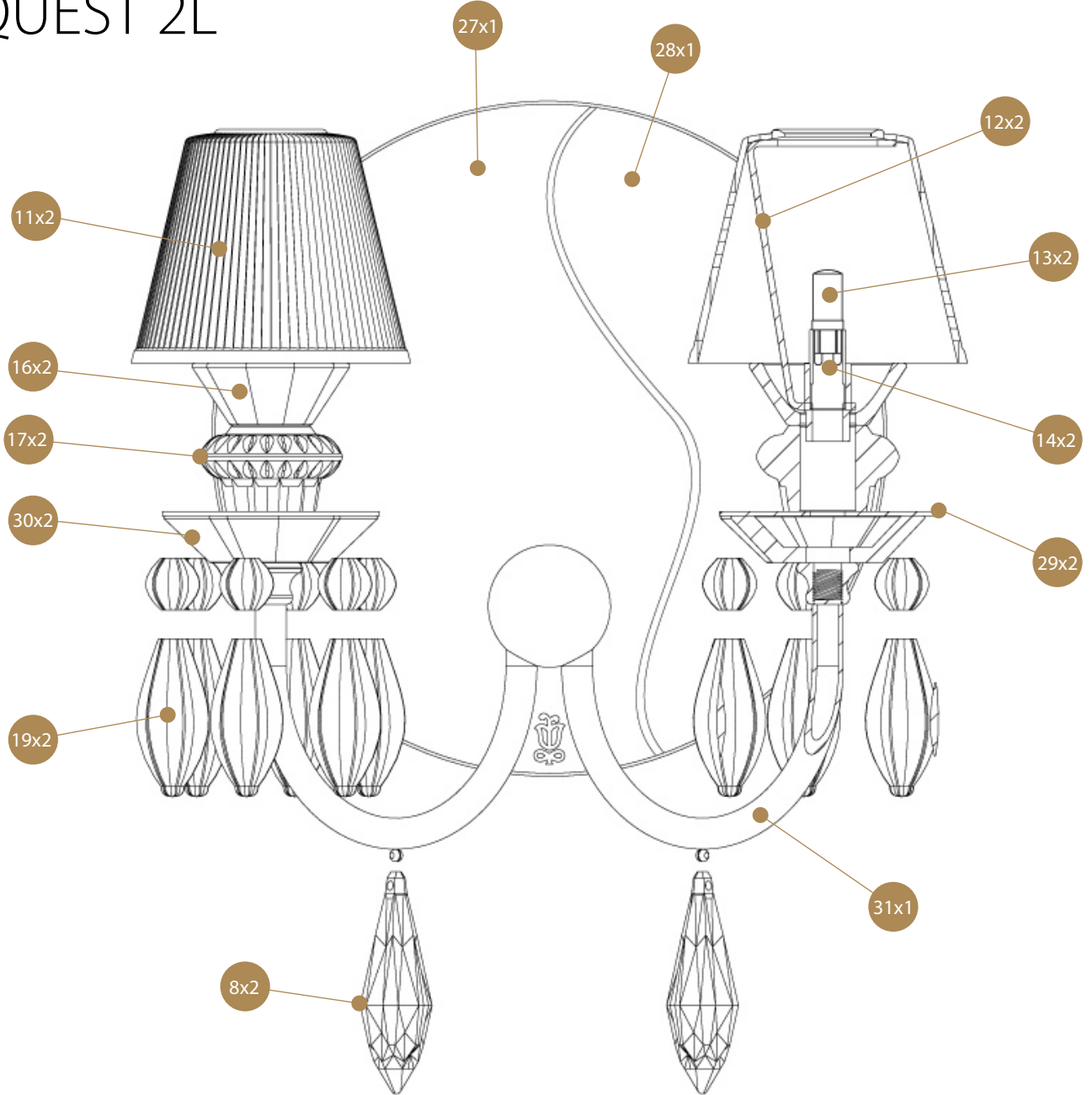


BELLE DE NUIT WALL 2L INSTALLATION GUIDE

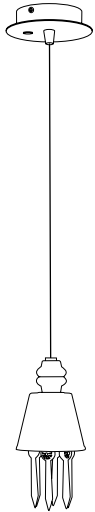


REF. 01023197 WHITE (CE/UK) / REF. 01023198 WHITE (US) / REF. 01023199 WHITE (JP) / REF. 01023217 BLACK (CE)
REF. 01023218 BLACK (US) / REF. 01023219 BLACK (JP) / REF. 01023237 GREEN (CE/UK) / REF. 01023238 GREEN (US)
REF. 01023239 GREEN (JP) / REF. 01023257 BLUE (CE/UK) / REF. 01023258 BLUE (US) / REF. 01023259 BLUE (JP)
REF. 01023277 PINK (CE/UK) / REF. 01023278 PINK (US) / REF. 01023279 PINK (JP)
REF. 01023297 MULTICOLOR (CE/UK) / REF. 01023298 MULTICOLOR (US) / REF. 01023299 MULTICOLOR (JP)
REF. 01023317 GOLD (CE/UK) / REF. 01023318 GOLD (US) / REF. 01023319 GOLD (JP)

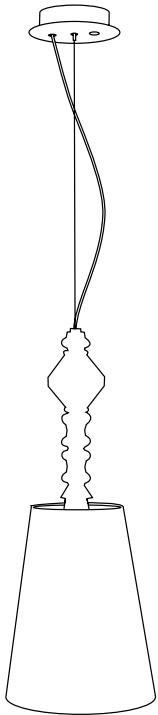
WALL LAMP BELLE DE NUIT SPEC REQUEST 2L



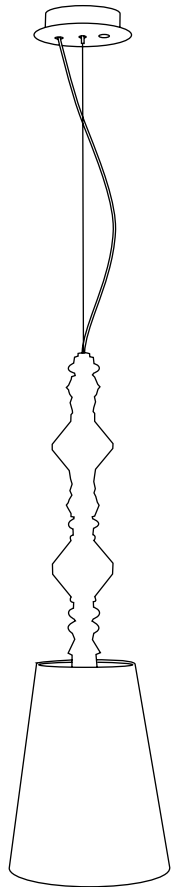
Ref	QTY	Finish	Material	Description	Measures	Ref	QTY	Finish	Material	Description	Measures
8	2	Various	Porcelain	Part 8	26x80 mm - 1" x 3 1/4"	19	2	Various	Porcelain	Part 19	25x82 mm - 9 3/4" x 3 1/4"
11	2	White	Porcelain	Lampshade	88x75 mm - 3 1/2" x 3"	27	1		Mirror	Mirror	217x3 mm - 8 3/4" x 1/4"
12	2	White	Metal	Lampshade support	44x107 mm - 1 3/4" x 4 1/4"	28	1	White	Wood	Wood	217x22 mm - 8 3/4" x 1/4"
13	2	Clear	Glass	G9 Bulb	26x66 mm - 1" x 2 3/4"	29	2	Various	Metal	Metal	70x15 mm - 2 3/4" x 1/2"
14	2	White	Porcelain	G9 Lampholder	18x26 mm - 3/4" x 1"	30	2	Various	Porcelain	Part 30	15x66 mm - 1/2" x 2 3/4"
16	2	Various	Porcelain	Part 16	48x29 mm - 2" x 1 1/4"	31	1	Various	Metal	Part 31	198x115 mm - 8" x 4 1/2"
17	2	Various	Porcelain	Part 17	46x28 mm - 1 3/4" x 1"						



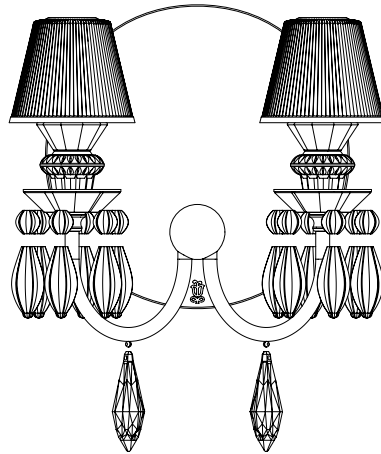
Lithophane lamp
300 (max) x Ø 11 cm
Weight: 8,3 kg



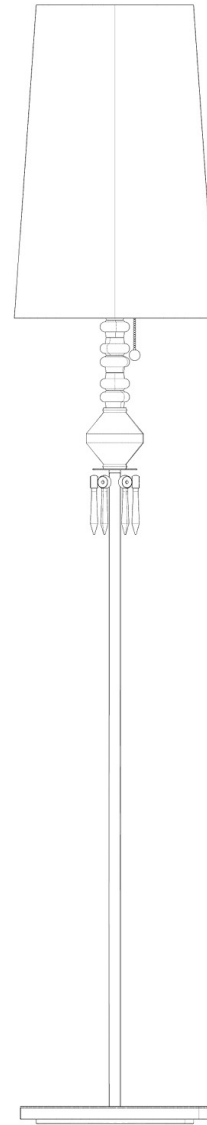
Floor lamp I
230 (max) x Ø 23 cm
Weight: 1,2 kg



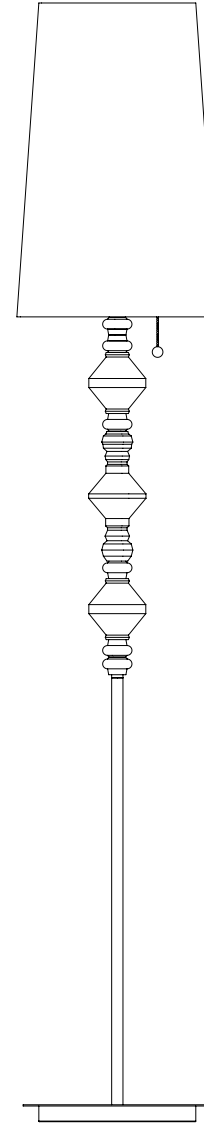
Floor lamp II
230 (max) x Ø 23 cm
Weight: 1,75 kg



Wall lamp
36 x 29 x 16 cm



Floor I lamp
181 x Ø 32 cm



Floor II lamp
181 x Ø 32 cm

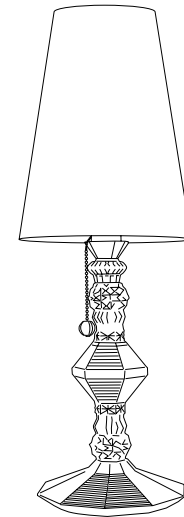


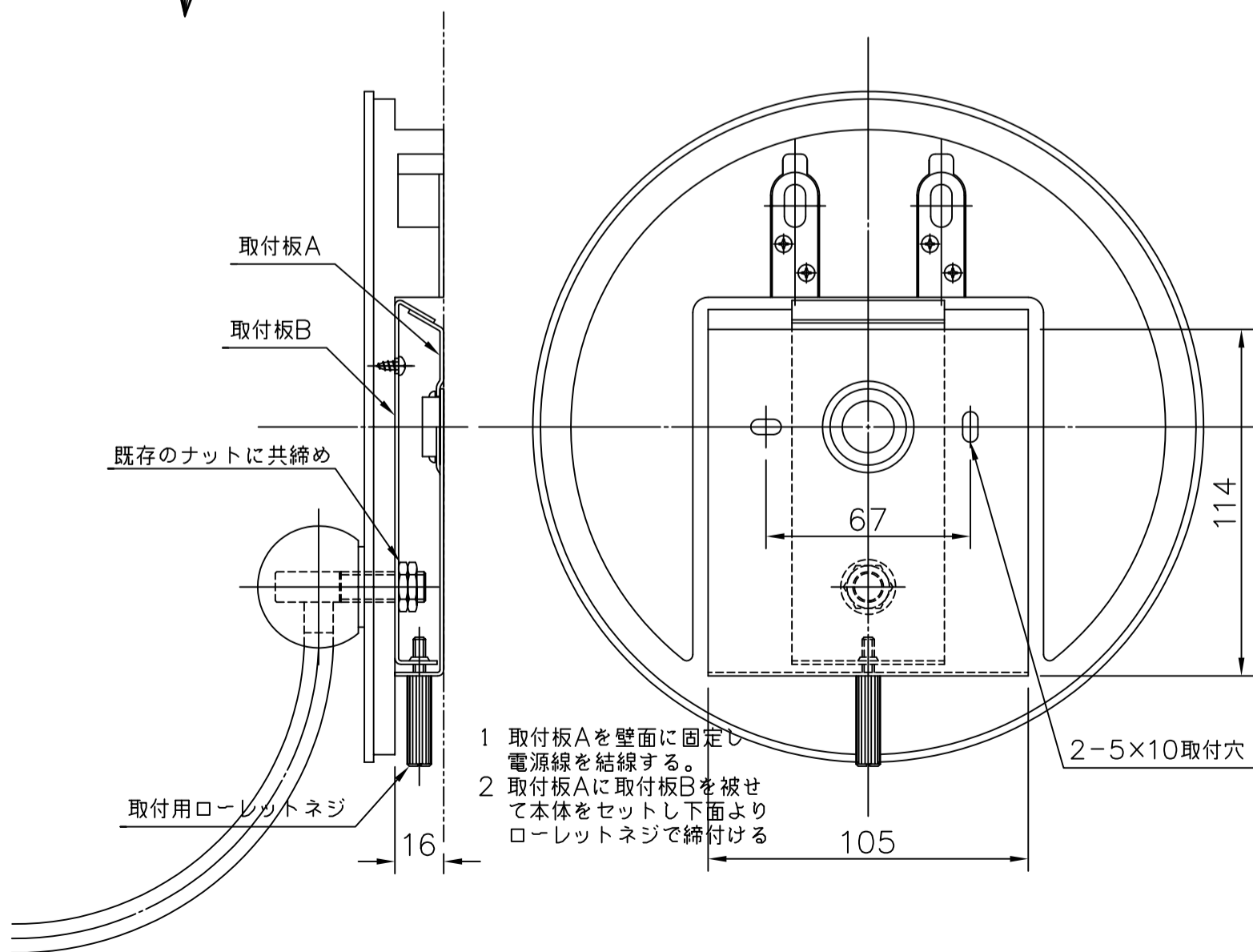
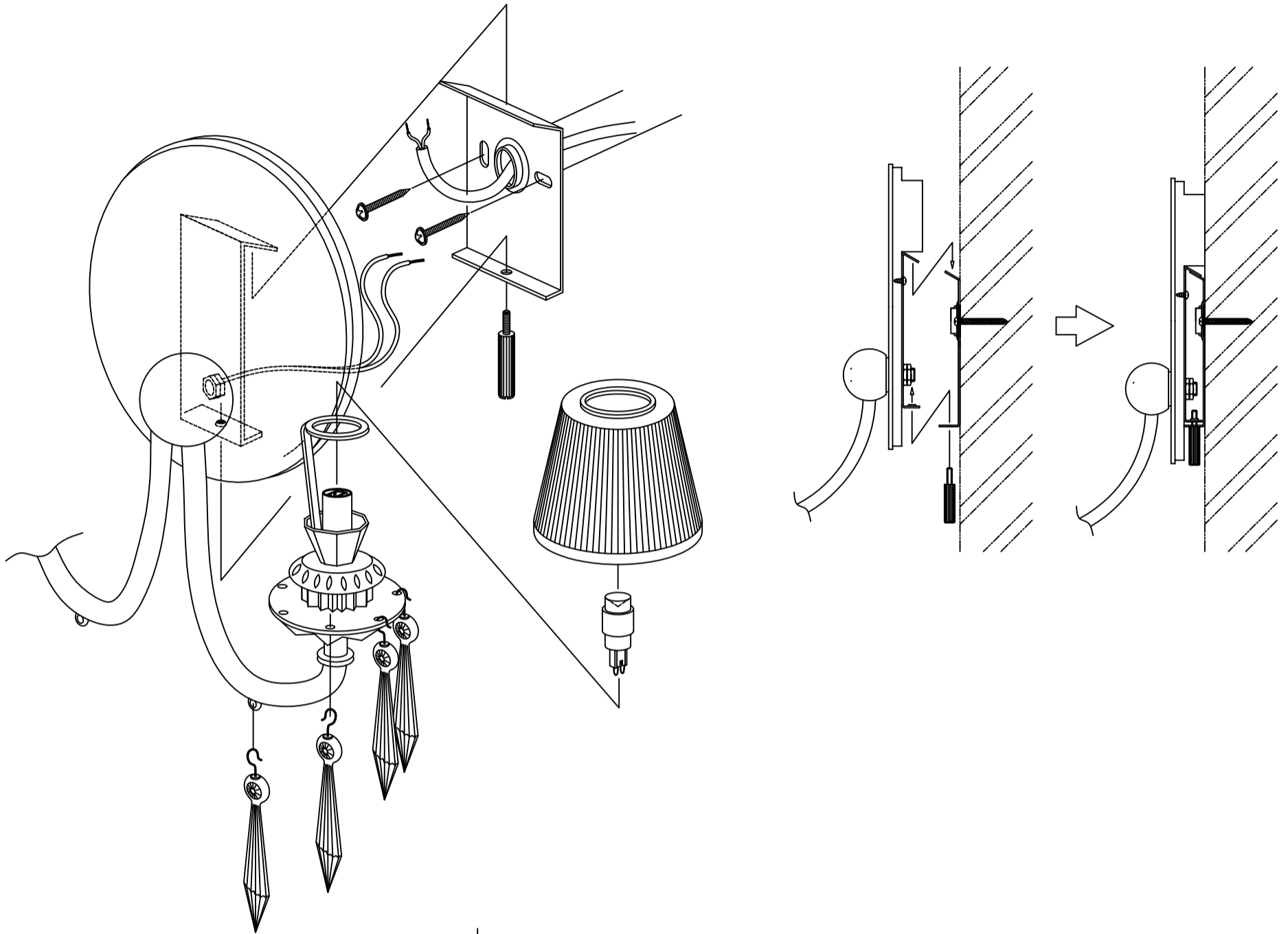
Table lamp big
55 x Ø 20 cm



Table lamp little
28 x Ø 9 cm

-Collection: Belle de Nuit

-Type: Wall lamp



-Collection: Belle de Nuit

-Type: Wall lamp

